

accesorios P.V.C.

accessories
p.v.c.

raccords
p.v.c.

12

accesorios p.v.c

CARACTERÍSTICAS: son elementos para la unión del tubo mediante encolado.

- accesorio encolar: PN 16.
- accesorio roscado: PN 10.

MATERIAL/ES: PVC-U.

MONTAJE:

- cortar el tubo perpendicularmente.
 - limpiar el tubo y accesorio con disolvente, no tocar la superficie limpia.
 - unir accesorio y tubo sin girarlos antes de 1 minuto desde la aplicación del adhesivo, y mantener unos instantes.
 - tiempo de secado: aprox. 1 h./bar.
- NORMAS:** UNE-EN-1452.

accessories p.v.c

CHARACTERISTICS: these are components for joining glued middle-ground tubes.

- glued accessory: PN 16.
- threaded accessory: PN 10.

MATERIAL/S: PVC.

ASSEMBLY:

- cut the tube perpendicular.
 - clean the tube and the accessory with solvent, do not touch the cleaned surface.
 - join the accessory and tube without turning them for 1 minute after applying the adhesive, and hold for a few moments.
 - drying time: approx. 1 h./bar.
- STANDARDS:** UNE-EN-1452.

raccords p.v.c.

CARACTERISTIQUES: ce sont des éléments pour le raccord du tuyau médian collé.

- accessoires à coller: PN 16.
- accessoire filetés: PN 10.

MATERIAU(X): PVC-U.

MONTAGE:

- coupez le tuyau perpendiculairement.
 - nettoyez le tuyau et l'accessoire avec du dissolvant, ne touchez pas la surface propre.
 - raccordez l'accessoire et le tuyau sans les tourner avant 1 minute après l'application de l'adhésif.
 - temps de séchage: approx. 1 h./bar.
- NORMES:** UNE-EN-1452.



se pueden suministrar como piezas sueltas/can be supplied as loose items/ls peuvent être fournis en pièces détachées

codo hembra-hembra 90° encolar

glued female-female 90° elbow / coude femelle-femelle 90° à coller



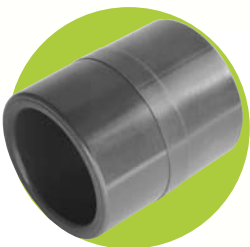
- REF. 30025
- REF. 30032
- REF. 30040
- REF. 30050
- REF. 30063

Ø
25 mm.
32 mm.
40 mm.
50 mm.
63 mm.

A	75	0,483	36,23	
A	45	0,726	32,67	
B	35	1,048	36,68	
C	50	1,573	78,65	
C	25	2,375	59,38	

manguito hembra encolar

glued female sleeve / raccord femelle à coller



- REF. 31625
- REF. 31632
- REF. 31640
- REF. 31650
- REF. 31663

Ø
25 mm.
32 mm.
40 mm.
50 mm.
63 mm.

A	125	0,521	65,13	
A	60	0,646	38,76	
A	35	0,887	31,05	
B	30	1,211	36,33	
C	45	1,773	79,79	

manguito mixto encolar hembra-rosca macho

glued female-threaded male combination sleeve / raccord à coller mixte femelle-avec filetage mâle



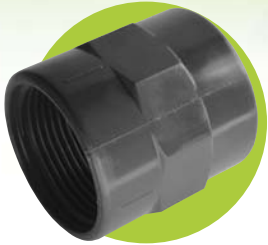
- REF. 31825
- REF. 31832
- REF. 31840
- REF. 31850
- REF. 31863

Ø
25 mm. - 3/4"
32 mm. - 1"
40 mm. - 1.1/4"
50 mm. - 1.1/2"
63 mm. - 2"

A	100	0,622	62,20	
A	60	0,767	46,02	
A	35	1,048	36,68	
B	30	1,250	37,50	
C	45	1,974	88,83	

manguito mixto encolar hembra-rosca hembra

glued female-threaded female combination sleeve / raccord à coller mixte femelle-avec filetage femelle



	Ø			€	€
• REF. 32025	25 mm. - 3/4"	B	125	0,966	120,75
• REF. 32032	32 mm. - 1"	A	60	1,089	65,34
• REF. 32040	40 mm. - 1.1/4"	A	35	1,369	47,92
• REF. 32050	50 mm. - 1.1/2"	B	30	1,693	50,79
• REF. 32063	63 mm. - 2"	C	45	2,500	112,50

te reducida hembra encolar

glued female reduced tee joint / té réduit femelle à coller



	Ø			€	€
• REF. 32831	32-25 mm.	A	25	1,048	26,20
• REF. 32841	40-25 mm.	B	20	1,573	31,46
• REF. 32842	40-32 mm.	B	20	1,573	31,46
• REF. 32851	50-25 mm.	C	20	2,256	45,12
• REF. 32852	50-32 mm.	C	20	2,256	45,12
• REF. 32853	50-40 mm.	C	20	2,256	45,12
• REF. 32863	63-40 mm.	C	15	3,141	47,12
• REF. 32864	63-50 mm.	C	15	3,141	47,12

te igual hembra encolar

glued female symmetrical tee joint / té égal femelle à coller



	Ø			€	€
• REF. 32225	25 mm.	A	50	0,646	32,30
• REF. 32232	32 mm.	A	25	0,928	23,20
• REF. 32240	40 mm.	B	20	1,490	29,80
• REF. 32250	50 mm.	C	20	2,137	42,74
• REF. 32263	63 mm.	C	15	3,021	45,32

se pueden suministrar como piezas sueltas / can be supplied as loose items / ils peuvent être fournis en pièces détachées

unión 3 piezas hembra-hembra encolar

3 part female-female union / raccord 3 pièces femelle-femelle



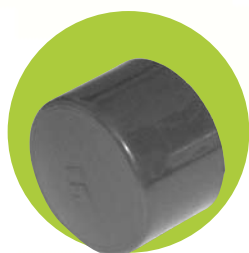
- REF. 31225
- REF. 31232
- REF. 31240
- REF. 31250
- REF. 31263

Ø
25 mm.
32 mm.
40 mm.
50 mm.
63 mm.

A	35	1,612	56,42	
A	30	2,378	71,34	
B	25	2,860	71,50	
C	35	3,669	128,42	
C	15	5,402	81,03	

tapón hembra encolar

glued plug stopper / bouchon femelle à coller



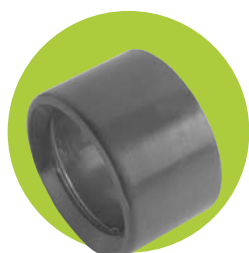
- REF. 33025
- REF. 33032
- REF. 33040
- REF. 33050
- REF. 33063

Ø
25 mm.
32 mm.
40 mm.
50 mm.
63 mm.

A	150	0,404	60,60	
A	100	0,524	52,40	
A	50	0,807	40,35	
A	30	1,250	37,50	
A	20	1,734	34,68	

casquillo reductor

reducing socket / manchon réducteur



- REF. 33231
- REF. 33242
- REF. 33253
- REF. 33264

Ø
32-25 mm.
40-32 mm.
50/40 mm.
63/50 mm.

A	150	0,363	54,45	
A	100	0,524	52,40	
A	50	0,646	32,30	
A	30	0,928	27,84	